



**Formular für Lamellenbänder /
form for flexible shunts**

- Anfrage / inquiry**
- Angebot / quotation**
- Bestellung / purchase order**

Auftraggeber / customer

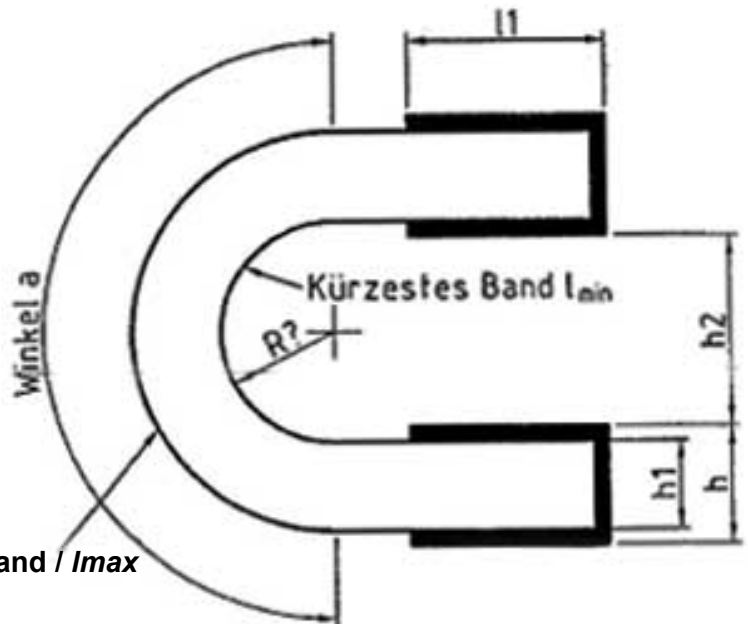
Kontakt / contact person

Anschrift / address

email

homepage

**Anfrage-, Angebots-, Bestell-Nr. /
inquiry-, quotation-, purchase order-no.**



**Wichtige Angaben /
important Informations!!**

A) Bei gebogenen Bändern / for bended shunts:

Winkel a / angle a Abstand (h_2) / distance (h_2)

Längstes Band / longest shunt l_{max} kürzestes Band / shortest shunt l_{min}

Dicke des Bandes (h_1) in mm /
thickness of shunt (h_1) in mm

Dicke der Anschlüsse (h) in mm /
thickness of connection heads (h) in mm

Länge der Anschlußstücke (l_1) in mm /
length of connection heads (l_1) in mm Radius (R), wenn möglich in mm /
radius (R), if possible in mm

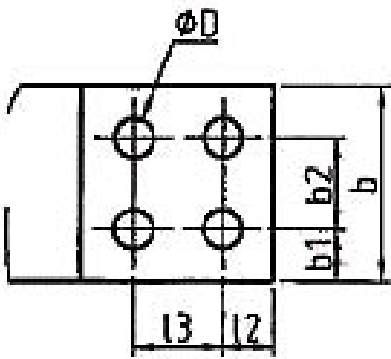
B) Bei geraden Bändern / for straight shunts:

Gesamtlänge in mm / whole length in mm:

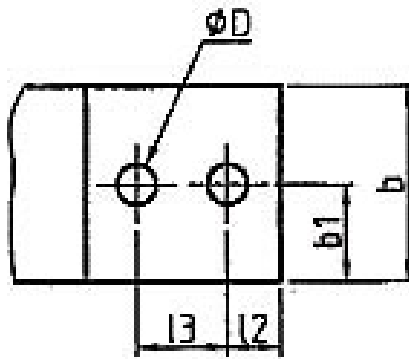
Dicke des Bandes (h1) in mm / thickness of shunt (h1) in mm: Länge der Anschlußstücke (l1) in mm / length of connection heads (l1) in mm:

Dicke der Anschlußstücke (h) in mm / thickness of connection heads (h) in mm:

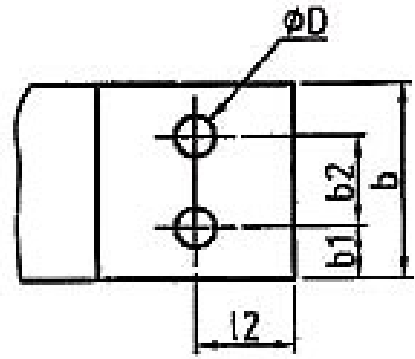
Bohrbilder der Anschlußstücke / bores of the connection heads



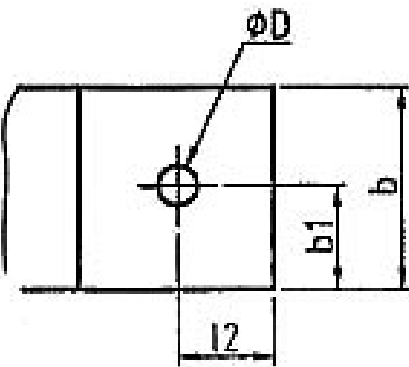
Form A



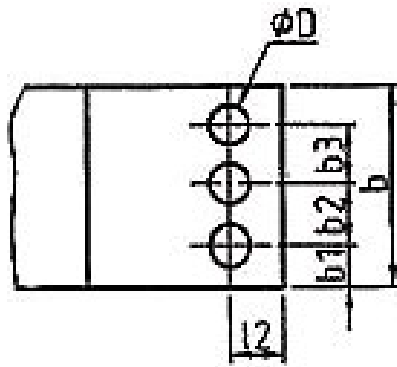
Form B



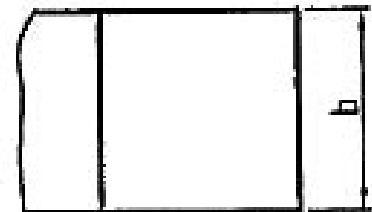
Form C



Form D



Form E



Form F

b in mm b1 in mm b2 in mm b3 in mm

l2 in mm l3 in mm ØD in mm

Werkstoff / material Härte / hardness

Oberflächenbehandlung / treatment of surface Ja / yes Nein / no

Wenn ja, welche? / if yes, which?

Lieferbar in allen Sonderausführungen und Abmessungen !
available in all dimensions for your special needs!

